

\$899,000 - 116 Belvedere Drive Se, Calgary

MLS® #A2191797

\$899,000

6 Bedroom, 4.00 Bathroom, 2,387 sqft

Residential on 0.09 Acres

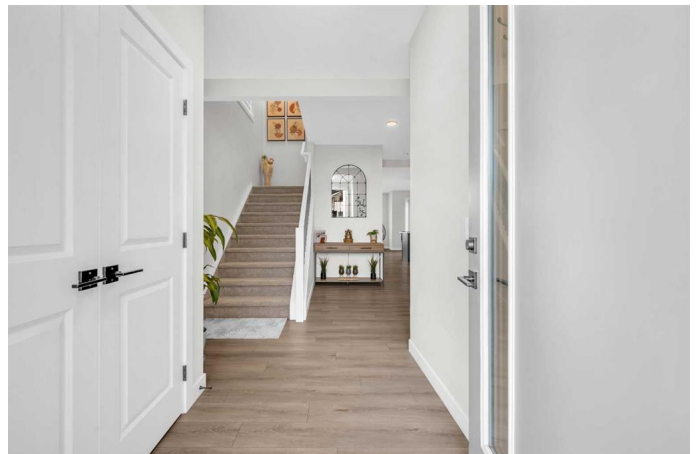
Belvedere., Calgary, Alberta

This elegant home, situated in the highly desirable community of Belvedere, is built on a premium walkout/sunshine lot backing onto a serene pond and walking path. Offering six bedrooms, an office, four full bathrooms, a spacious bonus room, and a double attached garage, this stunning residence is designed for both luxury and comfort.

The main floor features an open-concept design that welcomes abundant natural light. Highlights include 9-ft ceilings, a spacious living area, a full bathroom, a gourmet kitchen with a gas range, a built-in microwave, an upgraded refrigerator with a touch panel screen, and a large pantry. The separate office can easily be converted into an additional bedroom. Premium finishes include luxury vinyl plank flooring, quartz countertops, and stainless steel appliances. A/C rough-ins are also included.

The upper level boasts four generous bedrooms, a huge family room, a laundry room, and two full bathrooms and main level has one full bathroom. Beautiful wallpapers and artistic wall décor enhance the home's charm.

The fully finished walkout basement features a legal two-bedroom with a private entrance, backing directly onto the picturesque pond and wetland. The basement is currently rented, providing an excellent income opportunity.



Conveniently located within walking distance of a major shopping plaza, including Costco, banks, restaurants, and a Cineplex, this home offers easy access to all amenities. It is just one minute from major highways and seven minutes from Chestermere Lake, with a bus stop nearby.

Experience luxury living in a tranquil setting, where every detail is thoughtfully designed for comfort and elegance.

Built in 2021

Essential Information

MLS® #	A2191797
Price	\$899,000
Bedrooms	6
Bathrooms	4.00
Full Baths	4
Square Footage	2,387
Acres	0.09
Year Built	2021
Type	Residential
Sub-Type	Detached
Style	2 Storey
Status	Active

Community Information

Address	116 Belvedere Drive Se
Subdivision	Belvedere.
City	Calgary
County	Calgary
Province	Alberta
Postal Code	T2A 7G1

Amenities

Parking Spaces	4
----------------	---

Parking	Double Garage Attached
# of Garages	2

Interior

Interior Features	Built-in Features, Kitchen Island, No Animal Home, No Smoking Home, Open Floorplan, Pantry, Quartz Counters, Separate Entrance, Walk-In Closet(s)
Appliances	Dishwasher, Gas Cooktop, Microwave, Oven, Refrigerator, Washer/Dryer
Heating	Central, Natural Gas
Cooling	None
Fireplace	Yes
# of Fireplaces	1
Fireplaces	Electric
Has Basement	Yes
Basement	Exterior Entry, Finished, Full, Suite, Walk-Out

Exterior

Exterior Features	Playground, Private Yard
Lot Description	Backs on to Park/Green Space, Landscaped, No Neighbours Behind
Roof	Asphalt Shingle
Construction	Concrete, Mixed, Wood Frame
Foundation	Poured Concrete

Additional Information

Date Listed	February 3rd, 2025
Days on Market	77
Zoning	R-G

Listing Details

Listing Office	eXp Realty
----------------	------------

Data is supplied by Pillar 9â„¢ MLS® System. Pillar 9â„¢ is the owner of the copyright in its MLS® System. Data is deemed reliable but is not guaranteed accurate by Pillar 9â„¢. The trademarks MLS®, Multiple Listing Service® and the associated logos are owned by The Canadian Real Estate Association (CREA) and identify the quality of services provided by real estate professionals who are members of CREA. Used under license.