

\$649,888 - 258 Chelsea Place, Chestermere

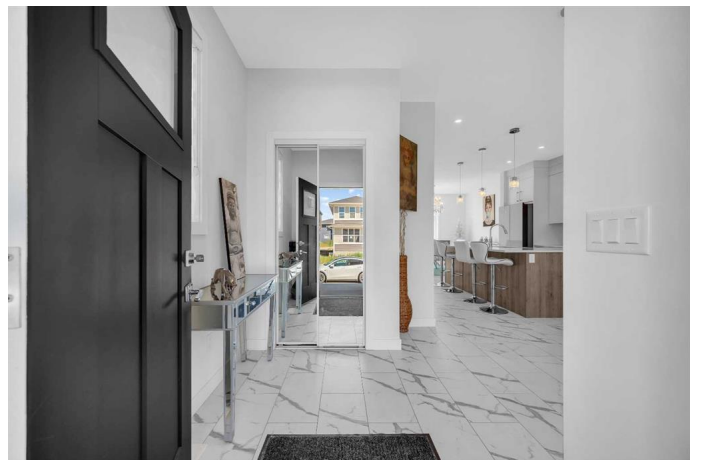
MLS® #A2194444

\$649,888

4 Bedroom, 3.00 Bathroom, 1,689 sqft
Residential on 0.08 Acres

Chelsea_CH, Chestermere, Alberta

Welcome to the exquisite Chelsea home, a haven of modern elegance and functionality in the vibrant community of Chestermere. This fully finished residence has been thoughtfully designed to provide a move-in-ready sanctuary that seamlessly blends style with practicality. Upon entering, you are greeted by an open floor plan that fosters a sense of togetherness, making it an ideal space for family gatherings and entertaining. The main floor boasts an impressive kitchen adorned with rich cabinetry, upgraded appliances, including a large gas cooktop, and quartz countertops. The thoughtful design extends to upgraded light fixtures and ample storage, creating a culinary haven for the home chef. The main floor also features a tiled mudroom with a 2-piece powder room, offering convenience for everyday living. The dining and living spaces are beautifully appointed, providing an inviting atmosphere for both formal and casual occasions. Ascending to the upper level, you'll discover three bedrooms, a Laundry room with quartz counters and with the primary suite standing out as a spacious retreat. The luxurious 5-piece en-suite in the primary suite features an oversized shower, standalone tub, and tray ceilings, creating a serene oasis within your own home. The fully finished basement, also accessible through a separate side entrance, adds versatility to the property. It includes a fourth bedroom, an additional bathroom, and a spacious family/rec area, offering additional living space for



various needs. Outside, an oversized parking pad provides ample space for all your parking needs and recreational toys, reflecting the practicality of this home. Beyond the property's boundaries, Chestermere beckons as a dynamic recreational city, capturing the essence of a laid-back lakeside community. Enjoy the endless opportunities to relax and unwind, all while maintaining convenient access to major routes, Calgary, and the airport. Don't miss the chance to make this residence your own.

Built in 2023

Essential Information

| | |
|----------------|-------------|
| MLS® # | A2194444 |
| Price | \$649,888 |
| Bedrooms | 4 |
| Bathrooms | 3.00 |
| Full Baths | 3 |
| Square Footage | 1,689 |
| Acres | 0.08 |
| Year Built | 2023 |
| Type | Residential |
| Sub-Type | Detached |
| Style | 2 Storey |
| Status | Active |

Community Information

| | |
|-------------|-------------------|
| Address | 258 Chelsea Place |
| Subdivision | Chelsea_CH |
| City | Chestermere |
| County | Chestermere |
| Province | Alberta |
| Postal Code | T1X 2T2 |

Amenities

| | |
|----------------|-------------|
| Parking Spaces | 4 |
| Parking | Parking Pad |

Interior

| | |
|-------------------|---|
| Interior Features | Chandelier, Double Vanity, High Ceilings, Kitchen Island, No Animal Home, No Smoking Home, Quartz Counters, Separate Entrance, Vinyl Windows, Walk-In Closet(s) |
| Appliances | Dishwasher, Dryer, Gas Stove, Microwave Hood Fan, Refrigerator, Washer, Window Coverings |
| Heating | Forced Air, Natural Gas |
| Cooling | None |
| Has Basement | Yes |
| Basement | Exterior Entry, Finished, Full, Walk-Up To Grade |

Exterior

| | |
|-------------------|---|
| Exterior Features | None |
| Lot Description | Back Lane, City Lot, Cleared, Cul-De-Sac, Level |
| Roof | Asphalt Shingle |
| Construction | Wood Frame |
| Foundation | Poured Concrete |

Additional Information

| | |
|----------------|---------------------|
| Date Listed | February 12th, 2025 |
| Days on Market | 69 |
| Zoning | R-1 |

Listing Details

| | |
|----------------|------------------------------|
| Listing Office | RE/MAX Real Estate (Central) |
|----------------|------------------------------|

Data is supplied by Pillar 9â„¢ MLSÂ® System. Pillar 9â„¢ is the owner of the copyright in its MLSÂ® System. Data is deemed reliable but is not guaranteed accurate by Pillar 9â„¢. The trademarks MLSÂ®, Multiple Listing ServiceÂ® and the associated logos are owned by The Canadian Real Estate Association (CREA) and identify the quality of services provided by real estate professionals who are members of CREA. Used under license.