

\$635,400 - 435 Chelsea Port Crossing, Chestermere

MLS® #A2207125

\$635,400

3 Bedroom, 3.00 Bathroom, 1,653 sqft
Residential on 0.08 Acres

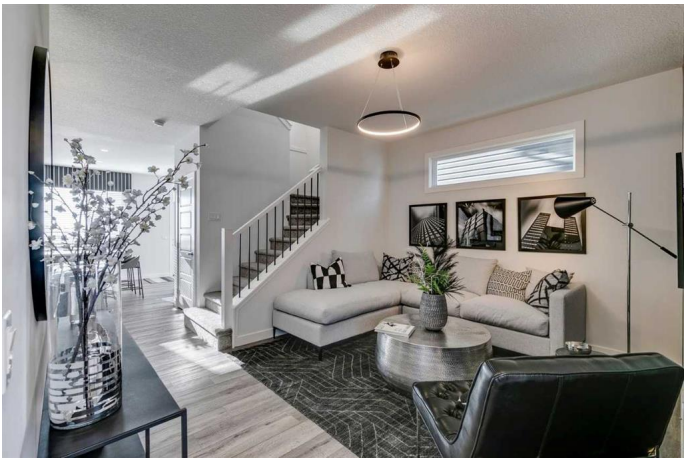
Chelsea_CH, Chestermere, Alberta

Welcome to the Onyx – a stunning home offering both style and functionality. The chef-inspired kitchen features stainless steel appliances, a chimney hood fan, a gas range, and a walk-in pantry with a French door. The main floor includes a versatile den/flex room and is finished with durable LVP flooring throughout the main floor and wet areas. Upstairs, enjoy a spacious bonus room and additional windows that fill the home with natural light. The primary bedroom offers a walk-in closet and a 3-piece ensuite with a fiberglass base shower with tiled walls. Quartz countertops with undermount sinks are featured throughout the home. The basement boasts larger windows and a side entrance, ready for your future plans. The Onyx is perfect for modern living! Photos are representative.

Built in 2024

Essential Information

MLS® #	A2207125
Price	\$635,400
Bedrooms	3
Bathrooms	3.00
Full Baths	2
Half Baths	1
Square Footage	1,653
Acres	0.08



Year Built	2024
Type	Residential
Sub-Type	Detached
Style	2 Storey
Status	Active

Community Information

Address	435 Chelsea Port Crossing
Subdivision	Chelsea_CH
City	Chestermere
County	Chestermere
Province	Alberta
Postal Code	T1X2P4

Amenities

Parking Spaces	4
Parking	Parking Pad

Interior

Interior Features	French Door, Kitchen Island, Open Floorplan, Pantry, Separate Entrance, Smart Home, Tankless Hot Water, Walk-In Closet(s)
Appliances	Dishwasher, Gas Range, Microwave, Range Hood, Refrigerator, Tankless Water Heater
Heating	Forced Air, Natural Gas
Cooling	None
Has Basement	Yes
Basement	Full, Unfinished

Exterior

Exterior Features	None
Lot Description	Back Lane
Roof	Asphalt Shingle
Construction	Stone, Vinyl Siding, Wood Frame
Foundation	Poured Concrete

Additional Information

Date Listed	March 31st, 2025
Days on Market	21
Zoning	TBD

Listing Details

Listing Office Bode Platform Inc.

Data is supplied by Pillar 9â,,ç MLSÂ® System. Pillar 9â,,ç is the owner of the copyright in its MLSÂ® System. Data is deemed reliable but is not guaranteed accurate by Pillar 9â,,ç. The trademarks MLSÂ®, Multiple Listing ServiceÂ® and the associated logos are owned by The Canadian Real Estate Association (CREA) and identify the quality of services provided by real estate professionals who are members of CREA. Used under license.