

# \$1,225,000 - 2020 Waterbury Road, Chestermere

MLS® #A2208086

**\$1,225,000**

7 Bedroom, 5.00 Bathroom, 3,259 sqft

Residential on 0.14 Acres

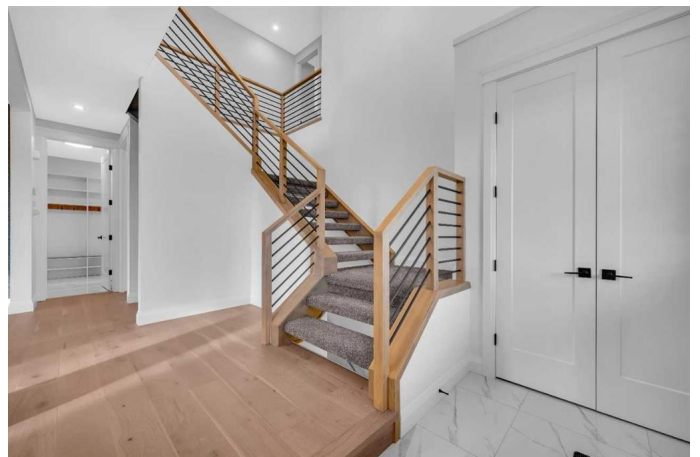
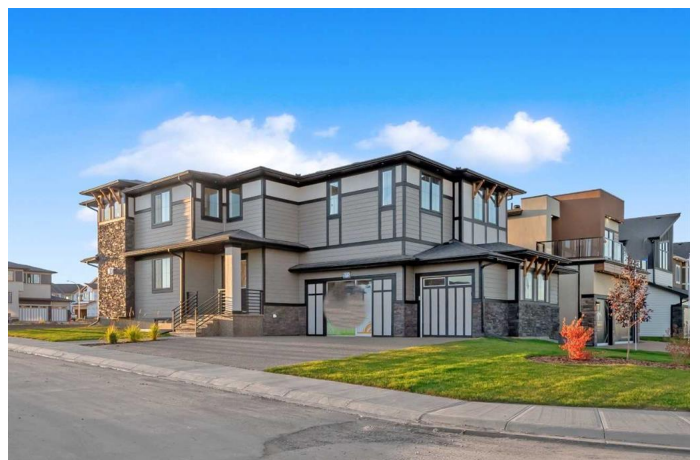
NONE, Chestermere, Alberta

This 2-storey custom-built Show Home in Waterford Estates offers 7 spacious bedrooms, 5 luxurious bathrooms, and elegant upgrades throughout the house with a finished basement. Features include 9 ft. ceilings, quartz countertops, KitchenAid stainless steel appliances, custom closets, hardwood flooring, and decorative wood paneling. The main floor boasts an open layout with a cozy gas fireplace, upgraded primary kitchen, spice kitchen, and a versatile den/office space. The upper floor includes a bonus room, a grand primary bedroom with a 6-piece ensuite, a second master bedroom, and a laundry room. The fully finished basement features a large rec. room with an electric fireplace, a wet bar, 3 additional bedrooms, and a full bathroom. Additional amenities include open riser stairs, a triple-car garage, an exposed aggregate driveway, and a glass railing on the deck. Set on a corner lot, this luxurious home perfectly balances style, functionality, and comfort for modern family living.

Built in 2024

## Essential Information

MLS® #	A2208086
Price	\$1,225,000
Bedrooms	7
Bathrooms	5.00
Full Baths	5



Square Footage	3,259
Acres	0.14
Year Built	2024
Type	Residential
Sub-Type	Detached
Style	2 Storey
Status	Active

### **Community Information**

Address	2020 Waterbury Road
Subdivision	NONE
City	Chestermere
County	Chestermere
Province	Alberta
Postal Code	T1X2Y8

### **Amenities**

Parking Spaces	6
Parking	Triple Garage Attached
# of Garages	3

### **Interior**

Interior Features	Bar, Built-in Features, Double Vanity, French Door, High Ceilings, Kitchen Island, Low Flow Plumbing Fixtures, No Animal Home, No Smoking Home, Pantry, Stone Counters
Appliances	Bar Fridge, Built-In Oven, Dishwasher, Electric Cooktop, Gas Range, Microwave, Range Hood, Refrigerator
Heating	Forced Air, Natural Gas, See Remarks
Cooling	None
Fireplace	Yes
# of Fireplaces	2
Fireplaces	Electric, Gas, Insert
Has Basement	Yes
Basement	Finished, Full

### **Exterior**

Exterior Features	None
Lot Description	Corner Lot
Roof	Asphalt Shingle

Construction	Cement Fiber Board, Stone, Wood Frame
Foundation	Poured Concrete

### **Additional Information**

Date Listed	April 2nd, 2025
Days on Market	14
Zoning	TBD

### **Listing Details**

Listing Office	Bode Platform Inc.
----------------	--------------------

Data is supplied by Pillar 9â,,ç MLSÂ® System. Pillar 9â,,ç is the owner of the copyright in its MLSÂ® System. Data is deemed reliable but is not guaranteed accurate by Pillar 9â,,ç. The trademarks MLSÂ®, Multiple Listing ServiceÂ® and the associated logos are owned by The Canadian Real Estate Association (CREA) and identify the quality of services provided by real estate professionals who are members of CREA. Used under license.