

\$209,000 - 201, 1826 11 Avenue Sw, Calgary

MLS® #A2208221

\$209,000

2 Bedroom, 1.00 Bathroom, 558 sqft

Residential on 0.00 Acres

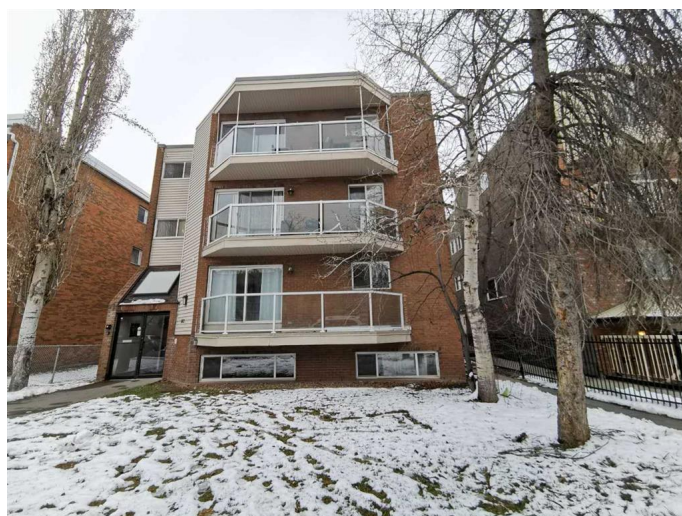
Sunalta, Calgary, Alberta

Prime Location in Sunalta – Surrounded by a variety of amenities, just a short stroll to the Sunalta LRT station, tennis courts, and with easy access to both Bow Trail and Crowchild Trail SW. This charming second-floor unit features 2 bedrooms, 1 bathroom, and a functional galley kitchen with stainless steel appliances. Enjoy the convenience of an in-suite washer and dryer. The bright and airy living room opens onto a balcony with sunny south-facing views. Assigned parking at the rear. This cozy 10-suite building offers a great opportunity as either an investment property or a perfect starter home – no more paying someone else’s mortgage!

Built in 1980

Essential Information

MLS® #	A2208221
Price	\$209,000
Bedrooms	2
Bathrooms	1.00
Full Baths	1
Square Footage	558
Acres	0.00
Year Built	1980
Type	Residential
Sub-Type	Apartment
Style	Single Level Unit
Status	Active



Community Information

Address	201, 1826 11 Avenue Sw
Subdivision	Sunalta
City	Calgary
County	Calgary
Province	Alberta
Postal Code	T3C0N6

Amenities

Amenities	Other
Parking Spaces	1
Parking	Stall, Assigned

Interior

Interior Features	Quartz Counters
Appliances	Electric Stove, Microwave, Range Hood, Refrigerator, Washer/Dryer Stacked
Heating	Baseboard
Cooling	Wall/Window Unit(s)
# of Stories	4

Exterior

Exterior Features	Balcony
Construction	Mixed

Additional Information

Date Listed	April 3rd, 2025
Days on Market	15
Zoning	M-H1

Listing Details

Listing Office	Skyrock
----------------	---------

Data is supplied by Pillar 9â„¢ MLS® System. Pillar 9â„¢ is the owner of the copyright in its MLS® System. Data is deemed reliable but is not guaranteed accurate by Pillar 9â„¢. The trademarks MLS®, Multiple Listing Service® and the associated logos are owned by The Canadian Real Estate Association (CREA) and identify the quality of services provided by real estate professionals who are members of CREA. Used under license.